



Next Generation

TRACK IN A BOX is a small, lightweight GPS Tracker requiring little, if any, installation when used in its battery powered configuration. An optional external power adaptor and miniature external aerial are available.

Key Features

- Portable AA Battery powered
- Simple to use. Insert the SIM card and batteries* and start tracking immediately
- Small 143.3mm x 76.2mm x 36.7mm. Weighs only 300g with four AA batteries.
- Includes times of start and stopping
- Speed
- Routes taken
- A completely confidential index to what is going on
- Provides management with daily online information
- Monitors your workforce, highlights underperforming staff, long lunch hours, optimistic overtime claims, elastic time sheets and poor customer call rates
- Improves reaction time to customer service requests
- Identifies excess costs with speed reports, diversion from direct routes and unauthorized private use
- Speeds up cash collection with proof of delivery and resolution of customer disputes

*Four AA Batteries to be provided by customer.

Our policy is one of continuous improvement. Specifications may change from time to time to reflect this.

THE STANDARD PACKAGE

Basic unit with battery pack



*Batteries not included

- GPRS SIM card – requires registration as part of subscription package
- *Getting Started* Guide
- Registration Document

THE OPTIONAL VEHICLE INSTALLATION KIT

- Vehicle Adapter Module that replaces standard battery pack and allows connection to external 9-32 VDC power supply. Includes rechargeable battery to allow limited operation after loss of external power.
- Remote GPS Antenna



- Clip on bracket – quick release plastic holster – style bracket



APPLICATIONS

- A Window on Your Business
- Loss prevention and security
- Workforce Management
- Vehicle Track and Trace
- Untethered Trailer Tracking
- Unpowered asset Monitoring
- Equipment Management

TRACK IN A BOX PRICING (Ex GST)	
The complete self powered package	\$631.80
The vehicle installation kit	\$135.45

10% GST applies to all purchases in Australia

A WINDOW ON YOUR BUSINESS

At the time of internal log in you will see the screen below which has three main sections

- (a) The active, scrollable, zoomable map
- (b) The dashboard showing all active/inactive devices
- (c) The control panel

The screenshot shows a web browser window titled "http://www.phantomeye.net/apex/login.php - Windows Internet Explorer". The page content is divided into three main sections:

- System Status:** Includes a "GO FINDER" logo, a "Welcome!" message, "Your last Login was 23/04/08 15:34", and sections for "Messages For You" and "System Administrator Messages".
- Map:** A large, interactive map of the Sydney region, Australia, showing various suburbs and roads. A red location marker is visible on the map.
- Active Devices:** A table with columns for "Date", "Name", "Location", "Battery", and "Speed".

Date	Name	Location	Battery	Speed
2008-05-01, 18:	YellSton		100	3
2008-06-01, 21:	RoverEmu		80	0
2007-10-30, 07:	Eagle_1		0	0
2007-11-03, 13:	Ranger_1		100	0
2007-11-05, 22:	Rover2		71	0
2008-03-29, 12:	PR1		100	0

At the bottom of the interface, there is a "Credits: 23456" indicator, a version number "v 0.3.0 Beta", an auto-refresh timer "Next auto refresh ... 224 sec", and a "Refresh View" button.

The screenshot shows the GOFINDER web application interface. The browser address bar displays 'http://www.phantomeye.net/apex/login.php'. The main content area features a satellite map with two red location markers. To the left of the map is a sidebar with navigation links: 'System Status', 'Welcome!', 'Your last Login was', 'Messages For You', 'Your Reports', 'Configure / Manage Your Device', 'Alerts and Notifications', 'System Configuration', 'Usage And Billing', and 'Utilities'. Below the map is a table with columns for 'ST', 'N', 'Date', 'Name', 'POI / Area', 'Location', 'Batter', 'Spec', 'Direction', 'Latitude', 'Longitude', and 'Detail'. The table contains two rows of active device data. At the bottom of the dashboard, there are status indicators: 'Credits: 23456', 'v 0.3.0 Beta', 'Next auto refresh ... 155 sec', and a 'Refresh View' button.

ST	N	Date	Name	POI / Area	Location	Batter	Spec	Direction	Latitude	Longitude	Detail
1	2008-06-10	Type_C	0.22K NE of T	30 HILLCREST RD QUAKERS HILL NSW 2763	61	5	N	-33.7297713	150.8928535	D..	
2	2008-06-10	Type_B	0.2K NE of T	30 HILLCREST RD QUAKERS HILL NSW 2763	31	2	WSW	-33.7298665	150.8927325	D..	

- Upon logging in for the first time the map will show a plot of all your ACTIVE units in the past 24 hours
- The map can be matched between MAP and PHOTO mode
- The map can be zoomed in by using the vertical scale bar on the top left hand side of the map by holding the slide and dragging it down
- Left, right, top and bottom panning can be performed by either dragging the map or clicking on the side arrows

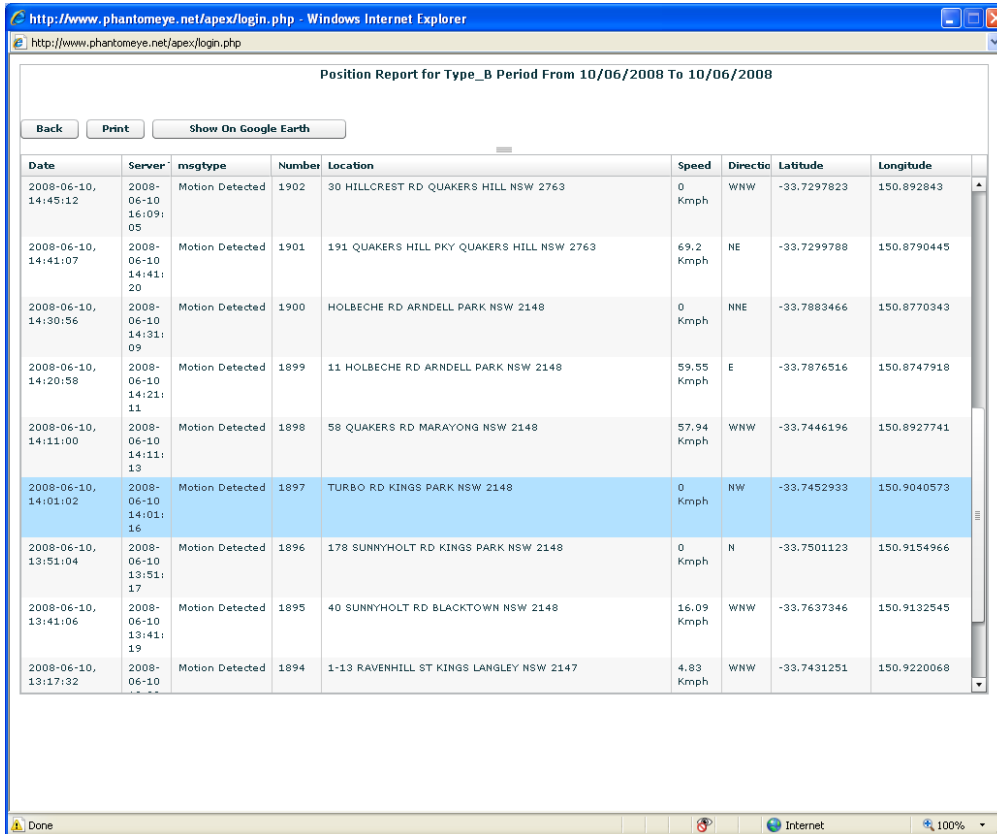
DASHBOARD

- The dashboard is divided into two sections Active Devices and Inactive Devices (those which have not send a message during the last 24 hours) Upon logging in all active devices are displayed on the map
- The dashboard displays an exact street address for each device and may be expanded to accommodate more details like latitude, longitude, points of interest etc. Details may also be displayed in a vertical format.
- The map and the active device data automatically refresh every five minutes or can be refreshed sooner by clicking on the “Refresh view button”

THE CONTROL PANEL

The control panel enables you to choose the relevant information you need and see alerts and notifications.

Reports



Position Report for Type_B Period From 10/06/2008 To 10/06/2008

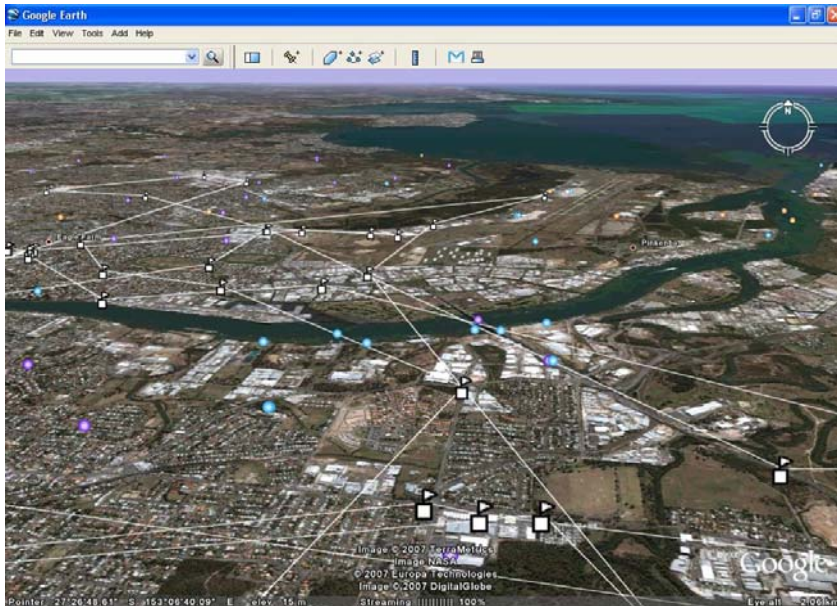
Back Print Show On Google Earth

Date	Server	msgtype	Number	Location	Speed	Directio	Latbude	Longitude
2008-06-10, 14:45:12	2008-06-10 14:09:05	Motion Detected	1902	30 HILLCREST RD QUAKERS HILL NSW 2763	0 Kmph	WNW	-33.7297823	150.892843
2008-06-10, 14:41:07	2008-06-10 14:41:20	Motion Detected	1901	191 QUAKERS HILL PKY QUAKERS HILL NSW 2763	69.2 Kmph	NE	-33.7299788	150.8790445
2008-06-10, 14:30:56	2008-06-10 14:31:09	Motion Detected	1900	HOLBECH RD ARNDELL PARK NSW 2148	0 Kmph	NNE	-33.7883466	150.8770343
2008-06-10, 14:20:58	2008-06-10 14:21:11	Motion Detected	1899	11 HOLBECH RD ARNDELL PARK NSW 2148	59.55 Kmph	E	-33.7876516	150.8747918
2008-06-10, 14:11:00	2008-06-10 14:11:13	Motion Detected	1898	58 QUAKERS RD MARAYONG NSW 2148	57.94 Kmph	WNW	-33.7446196	150.8927741
2008-06-10, 14:01:02	2008-06-10 14:01:16	Motion Detected	1897	TURBO RD KINGS PARK NSW 2148	0 Kmph	NW	-33.7452933	150.9040573
2008-06-10, 13:51:04	2008-06-10 13:51:17	Motion Detected	1896	178 SUNNYHOLT RD KINGS PARK NSW 2148	0 Kmph	N	-33.7501123	150.9154966
2008-06-10, 13:41:06	2008-06-10 13:41:19	Motion Detected	1895	40 SUNNYHOLT RD BLACKTOWN NSW 2148	16.09 Kmph	WNW	-33.7637346	150.9132545
2008-06-10, 13:17:32	2008-06-10	Motion Detected	1894	1-13 RAVENHILL ST KINGS LANGLEY NSW 2147	4.83 Kmph	WNW	-33.7431251	150.9220068

There are two reports

- Last ten messages – this is a quick way of seeing recent information
- History – this shows the messages received from the unit between two selected dates chosen by the user.

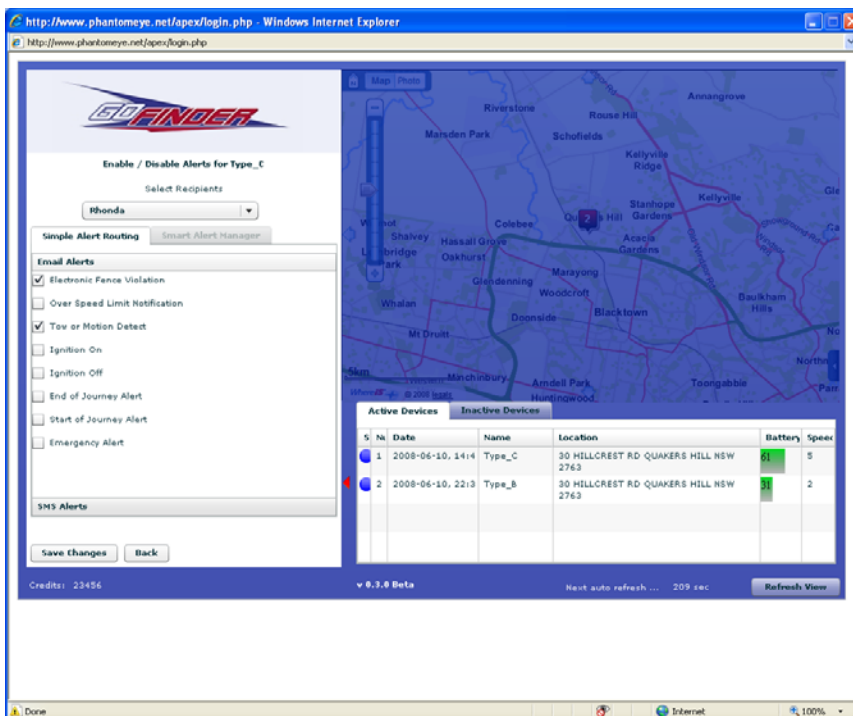
The reports open up in a grid and may be exported to Google Earth maps or to Microsoft Excel. All reports provide an option to be printed.



Each location of the report can be plotted on the map individually without using Google Earth. The report collapses to the left and the position is plotted on the map

Alerts and Notifications

Alerts and notifications allow you to send an SMS or Email automatically from the system as seen as an event that requires attention happens. The screen shot below (Example only) shows that the recipient “Rhonda” will be sent an email when an electronic fence is violated or motion is detected.



Automatic Alerts Include

- Electronic Fence
- Over speed
- Tow or motion detect
- End of journey alert
- Start of journey alert

You may set different recipients to get different alerts

System Configuration

You may use this option to

- Change your password
- Add/Edit About Recipient

Utilities

The POI (Point of Interest) tool allows you to add your own POI's. They allow you to customise a report by a name that is more familiar to you rather than a street address e.g. "My Office" instead of 23 Kings Way, Malvern etc.

YOUR SUBSCRIPTION COSTS (Ex GST)

Includes all online access, mapping and GPRS SIM card costs

Pay Quarterly	\$105.00 Each device
Pay Six-Monthly	\$195.00 Each device
Pay Annually	\$360.00 Each device
Ten Units or More	\$300.00 Each device
SMS Alerts	\$0.22 each

10% GST applies to all purchases within Australia

