



## **Getting Started Guide**

**Version 1.0**

**September 2007**

**Copyright 2007 Locatrix Communications and Track in a Box**

## 1. WELCOME TO TRACK IN A BOX

Congratulations on the purchase of your Track In A Box. This document steps you through the initialization of your Track In A Box, and using the Gofinder Gold Tracking Platform for the first time.

By carefully following the few simple procedures outlined here, you will be using Track In A Box productively in no time at all.

## 2. PREPARING YOUR TRACK IN A BOX LOCATOR

Your UNIT ID is \_\_\_\_\_

Your SIM/Mobile No. is \_\_\_\_\_

- a. If operating in battery mode, you will need to place four AA batteries in the device. Carefully open up the Locator by removing the single screw on the device cover, and insert the batteries with positive and negative terminals as shown. Check that the sim card is still seated securely in it's holder.

Otherwise you will need to insert the Vehicle Adaptor Module (VAM) and install it in your vehicle (see separate installation instructions)

- b. The next step is to initialize the device. The device, or vehicle, should be placed outdoors, with a clear view of the sky, in an area where you know you have good GSM signal strength. Once the device receives its first satellite locks, *it will take between 30 -60 minutes to fully initialize*. Please be patient whilst this occurs.

Once the Track In A Box Locator has been initialized please proceed to the next section.

## 3. USING THE 'TRACK IN A BOX' WEB APPLICATION

STEP 1 – Open your favourite internet browser and visit <http://www.trackinabox.net>  
You may wish to bookmark this site which will appear in your Favourites as Track in a Box.



## STEP 2 - Enter your Log In Details

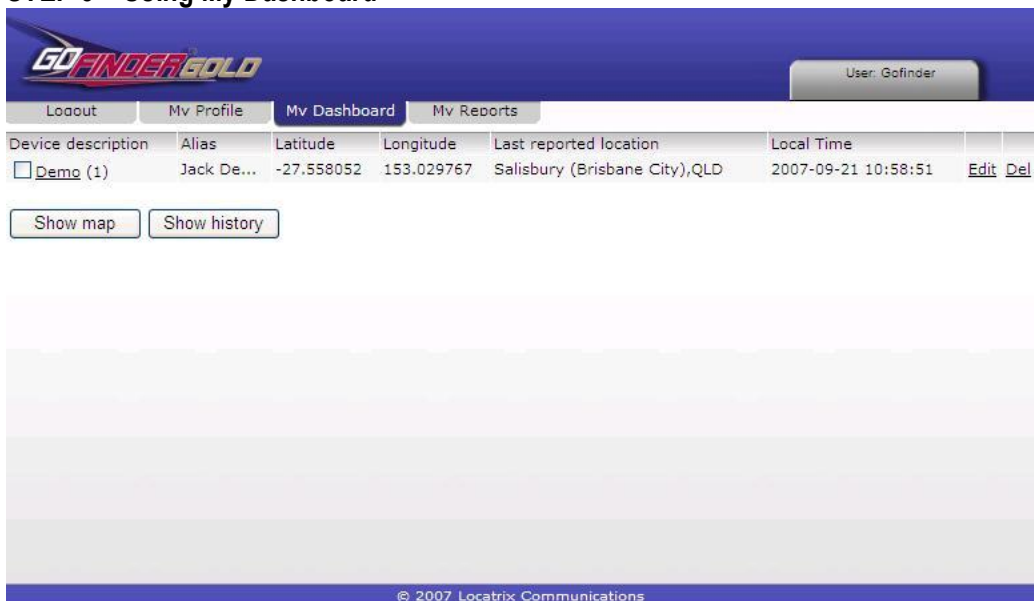
Your Username is \_\_\_\_\_

Your Password is \_\_\_\_\_

Then CLICK "Login" Button.

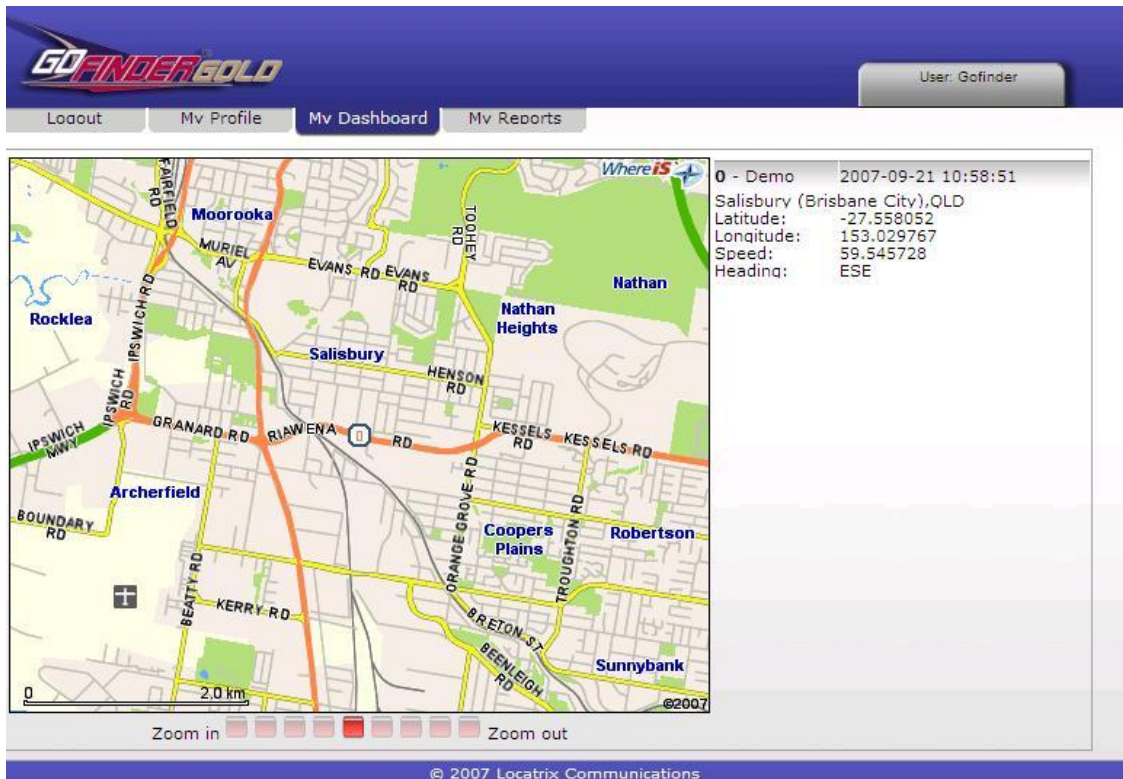
You will then see "My Dashboard"

## STEP 3 – Using My Dashboard



The screen shows the latest reported location of your Device(s). When in motion this will be updated every 5 -10 minutes.

- a. To show this location on a street map, select the device by ticking the box under “Device Location” and CLICK “Show Map” Button



You may zoom in or out of the map by selecting the control underneath it.

You may return to “My Dashboard” at anytime by clicking on the blue tab at the top of the screen.

- c. To review the history of your device’s movements, select the device, and CLICK “Show History” button. Then choose the period you wish to display and CLICK “Select”.

GoFINDER GOLD User: Gofinder

Logout Mv Profile Mv Dashboard Mv Reports

Period to display: Last 24 hours Select

To show a map for a specific position click on the time and date.

Module	Trigger	Location	Speed(km/h)	Bat	Time
GF000002(3)	Motion	Rocklea (Brisbane City),QLD	Stopped	97%	<a href="#">2007-09-21 10:37:10</a>
GF000002(3)	Motion	Rocklea (Brisbane City),QLD	Stopped	97%	<a href="#">2007-09-21 10:26:22</a>
GF000002(3)	Motion	Rocklea (Brisbane City),QLD	Stopped	98%	<a href="#">2007-09-21 09:49:27</a>
GF000002(3)	Motion	Rocklea (Brisbane City),QLD	10	97%	<a href="#">2007-09-21 09:38:33</a>
GF000002(3)	Motion	Yeronga (Brisbane City),QLD	40	97%	<a href="#">2007-09-21 09:27:16</a>
GF000002(3)	Motion	City (Brisbane City),QLD	34	98%	<a href="#">2007-09-21 09:14:51</a>
GF000002(3)	Motion	Fortitude Valley (Brisbane City),QLD	5	98%	<a href="#">2007-09-21 09:03:58</a>
GF000002(3)	Motion	Clayfield (Brisbane City),QLD	23	98%	<a href="#">2007-09-21 08:50:09</a>
GF000002(3)	Motion	Hamilton (Brisbane City),QLD	35	99%	<a href="#">2007-09-20 15:12:27</a>
GF000002(3)	Motion	Fortitude Valley (Brisbane City),QLD	3	100%	<a href="#">2007-09-20 15:01:27</a>
GF000002(3)	Motion	Fairfield (Brisbane City),QLD	56	100%	<a href="#">2007-09-20 14:49:45</a>
GF000002(3)	Motion	Rocklea (Brisbane City),QLD	Stopped	100%	<a href="#">2007-09-20 14:38:45</a>
GF000002(3)	Motion	Yeronga (Brisbane City),QLD	2	100%	<a href="#">2007-09-20 14:27:58</a>
GF000002(3)	Motion	Yeronga (Brisbane City),QLD	Stopped	9%	<a href="#">2007-09-20 14:15:21</a>

© 2007 Locatrix Communications

To show a street map for any specific location, click on the time and date on the right of the screen.

- d. To export the data from History, CLICK on “EXPORT” on the top left of the table and select the format you require, and then CLICK the “Export” button in the window presented.

GoFINDER GOLD User: Graham Thomas

Logout Mv Profile

Period to display: Last 7 days

To show a map for a specific position

Demo2 EXPORT

Module	Trigger	Location	Speed(km/h)	Bat	Time
GF000003(3)	Motion			53%	<a href="#">2007-04-24 07:00:58</a>
GF000003(3)	Motion			53%	<a href="#">2007-04-24 06:00:58</a>
GF000003(3)	Motion			65%	<a href="#">2007-04-24 06:00:38</a>
GF000003(3)	Motion			54%	<a href="#">2007-04-23 16:37:17</a>
GF000003(3)	Motion			66%	<a href="#">2007-04-23 16:34:16</a>

Export history for device 'Demo2'

Period: Last 7 days

Format: GPX (selected), GPX, ECSV, Google Earth

Internet 100%

© 2007 Locatrix Communications

GPX is a light – weight XML data format for the interchange of GPS data see [www.topografix.com](http://www.topografix.com)

CSV (Comma – separated Values) is the most common format in the industry used to export spreadsheets and databases to MS Excel

GOOGLE EARTH is a free internet site for satellite imagery on which you can plot your device history. See <http://earth.google.com>

#### STEP 4 - My Reports

You may generate reports in PDF format for single or all devices for weekly , monthly or annual periods.

Select the device and period and CLICK on “Generate” The file can then be opened or saved , viewed or printed off

Time	Module	Trigg	Latitude	Longitude	Location	Head	Speed km/h	Batt
2007-09-21								
2007-09-21 10:58:51	GF000002	Motion	-27.558052	153.029767	Salisbury (Brisbane City),QLD	ESE	59.00	097%
2007-09-21 10:47:57	GF000002	Motion	-27.555048	153.020833	Rocklea (Brisbane City),QLD	S	22.00	097%
2007-09-21 10:37:10	GF000002	Motion	-27.555885	153.012396	Rocklea (Brisbane City),QLD	N	Stopped	097%
2007-09-21 10:26:22	GF000002	Motion	-27.546800	153.007933	Rocklea (Brisbane City),QLD	N	Stopped	097%
2007-09-21 09:49:27	GF000002	Motion	-27.546779	153.007688	Rocklea (Brisbane City),QLD	N	Stopped	098%
2007-09-21 09:38:33	GF000002	Motion	-27.555408	153.012013	Rocklea (Brisbane City),QLD	N	9.00	097%
2007-09-21 09:27:16	GF000002	Motion	-27.514379	153.019339	Yeronga (Brisbane City),QLD	SW	40.00	097%
2007-09-21 09:14:51	GF000002	Motion	-27.462565	153.015192	City (Brisbane City),QLD	SSE	33.00	098%
2007-09-21 09:03:58	GF000002	Motion	-27.456185	153.034475	Fortitude Valley (Brisbane City), QLD	SSW	4.00	098%
2007-09-21 08:50:09	GF000002	Motion	-27.427596	153.046128	Clayfield (Brisbane City),QLD	S	22.00	098%
Max speed	Min batt	Distance (km)						
67 km/h	007	19.72						

#### STEP 5 – Setting Alerts

##### SETTING SENTRY ALERTS

Before commencing check with Gofinder that your device is programmed to receive alerts. These are transmitted every 30 minutes.

STEP 1. At *My Dashboard* click on underlined Device Description e.g Tracker`1

STEP 2. Click on “Add Sentry” button

STEP 3. Add Sentry Description e.g. Three Ton Truck ABC 123

Click on “Add Sentry” button

STEP 4. You will see *Sentry successfully added*. Click on Edit at right hand side of The screen

STEP 5. Click on “Add Notifier” button to choose the method of notification e.g. Email or SMS

STEP 6. Select Email or SMS

Enter either the Email address you wish the alert to be sent to , or the Mobile number in the form 0400123456

Add Message e.g. ABC 123 position:

Click on “Add Notifier” button

STEP 7. You will see *Your Notifier has been successfully added*. You may add another Notifier e.g. a second email address or mobile number by clicking on “Add Notifier” button

You may Edit or Del at anytime by clicking on the appropriate button

STEP 8. To close click on *My Dashboard* at top of screen.

#### SETTING RADIAL ALERTS (GEOFENCING)

Before commencing check with Gofinder that your device is programmed to receive alerts.

STEP 1. At *My Dashboard* click on underlined Device Description e.g. Tracker 1

STEP 2. Click on “Add Alert” button

STEP 3. Add *Description* e.g. Three Ton Truck ABC 123

Add the *latitude and longitude* of the location you wish to Geofence (obtain these from a previously recorded position).

Choose the *radius* (500m. 1km. 2km. 5km) from the location for Notification

Choose if you wish to be alerted upon *Exit* or *Entry*

Click on “Add Alert” button

STEP 4. With your *Alert successfully Added* Click on Edit at right of screen

STEP 5. Click on “Add Notifier” button to choose the method of notification e.g. Email or SMS

STEP 6. Select Email or SMS

Enter either the Email address you wish the alert to be sent to , or the Mobile number in the form 0400123456

Add Message e.g. ABC 123 position:  
Click on "Add Notifier" button

STEP 7. You will see *Your Notifier has been successfully added*. You may add another Notifier e.g a second email address or mobile number by clicking on "Add Notifier" button

You may Edit or Del at anytime by clicking on the appropriate button.

STEP 8. To close click on *My Dashboard* at top of screen.

**N.B Alerts are sent from the Gofinder server via SMS each of which are charged at 25c and will be billed monthly. Email alerts are free of charge.**

#### 4. ONLINE HELP

Should you have any questions, or require help of any kind, please email [support@gofinder.net](mailto:support@gofinder.net) in the first instance.

#### 5. NOTICE

Our policy is one of continual product improvement. Accordingly, specifications and details may change from those listed above.